

Redime me, Domine à5

John Baldwin
(~1560 - 1615)

Canto

Re - dime me, Do - mi -

Alto I

Re - di - me me, re - di meme, Do - mi - ne, et

Alto II

Re - di - meme, Do - mi - ne, re - dime me, Do - mi - ne,

Tenor

Re - di - me me, Do - mi - ne,

Basso

Re - di meme, Do - mi - ne, Domi - ne, re - di meme, Do - mi - ne, et

6

ne, et mi - se - re - re - me - i, et mi - se - re - re me - i. Pes e - nim

mi - se - re - re me - i, et mi - se - re - re me - i, et mi - se - re - re me - i. Pes

et mi - se - re - re me - i, et mi - se - re - re me - i. Pes e - nim

et mi - se - re - re me - i. Pes

12

mi - se - re - re me - i, et mi - se - re - re me - i, me - i. Pes

me - us, pes e - nim me - us ste - tit in vi - a re - cta,

e - nim me - us, pes e - nim me - us ste - tit in vi - a re -

me - us, me - us ste - tit in vi - a re - cta, ste -

e - nim me - us ste - tit in vi -

e - nim me - us ste - tit in vi - a re - cta, ste - tit in

ste - tit in vi - a re - cta. In ec - cle si - is

cta, ste-tit in vi - a re - cta. In ec - cle-si - is benedi-cam

tit in vi - a re - cta. In ec cle - si is, in ec - cle-si - is

a re - cta. In ec - cle si - is be -

vi - a re - cta. In ec - cle-si - is, in ec cle-si -

benedi - cam te, Do - mi - ne, bene - di - cam te, Do - mi - ne.

te, Do - mi - ne, bene - di cam te, Do - mi - ne.

benedi - cam te, Do - mine, bene - di - cam te, Do-mi - ne.

ne - di - cam te, Do - mi - ne.

is, in ec - cle - si-is bene - di cam te, Do - mi - ne.

A - - - men.

A - - - men.

A - - - men.

A - - - men.

A - - - men.

2

Re - dime me, Do - mi -

6

ne, et mi - se - re - re me - i, et mi - se - re - re me -

10

- i. Pes e - nim me - us, pes e - nim me -

14

us ste - tit in vi - a re - cta,

17

ste - tit in vi - a re - cta. In ec - cle si -

21

- is be - ne - di - cam te, Do - mi -

24

ne, be - ne - di - cam te, Do - mi - ne.

27

A - men.

Alto I

Redime me, Domine à5

John Baldwin
(~1560 - 1615)

Re - di - me me, re - di-me me,

Do - mi-ne, et mi - se-re - re me - i, et mise-

re re me - i, et mi-se-re-re me - i. Pes

e - nim me - us, pes e - nim me -

us ste-tit in vi - a re - cta, ste-tit in vi - a re -

- cta. In ec - cle - si - is be-ne-di - cam

te, Do - mi - ne, bene - di cam te, Do-mi - ne.

A - - - men.

Alto II

Redime me, Domine à5

John Baldwin
(~1560 - 1615)

Re - di - me me, Do - mi - ne, re -

- dime me, Do - mi-ne, et mi - se - re-re me -

i, et mi - se - re - re me - i. Pes e-nim

me - us, me - us ste - tit in vi - a re -

- cta, ste - tit in vi - a re - cta. In ec cle -

si is, in ec - cle - si - is be-ne-di - cam te,

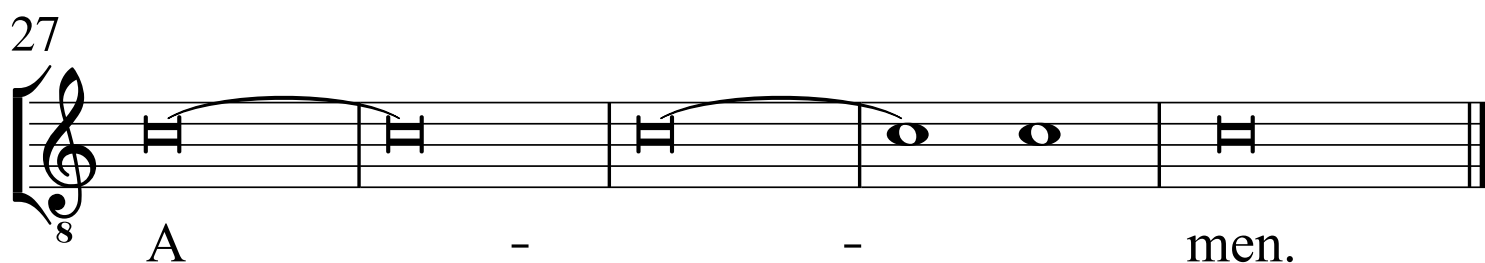
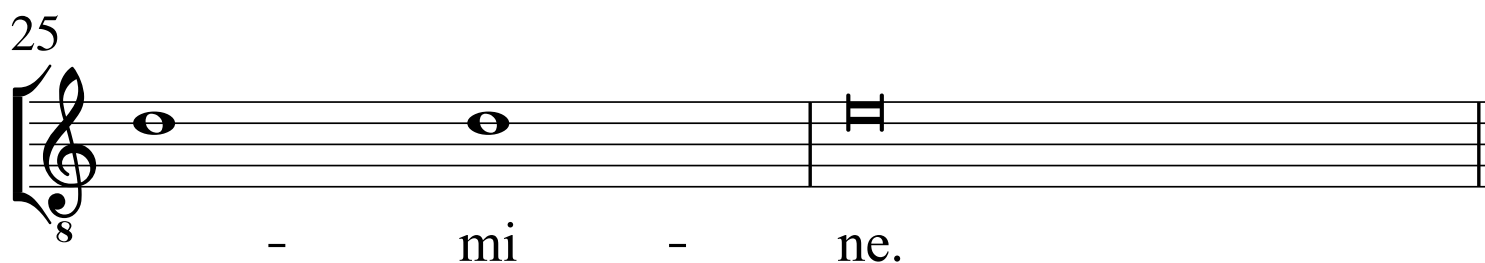
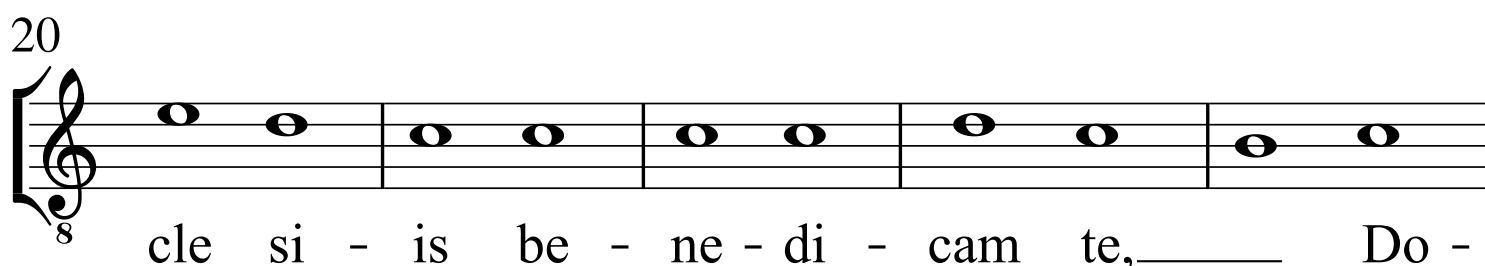
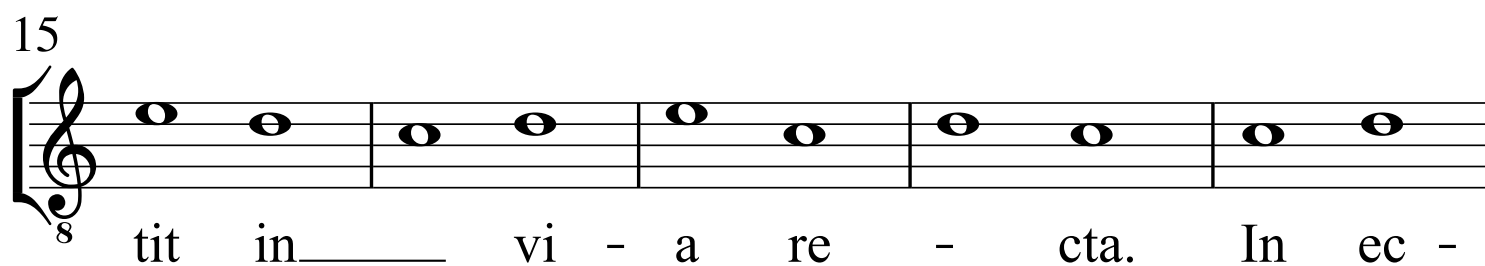
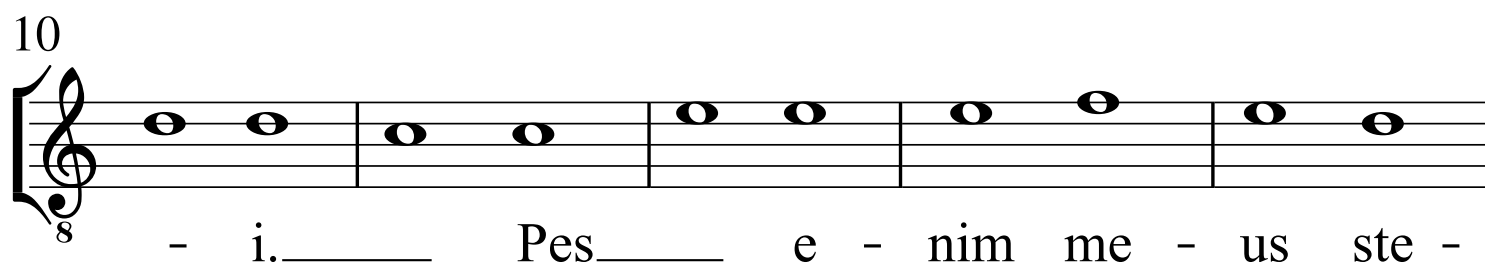
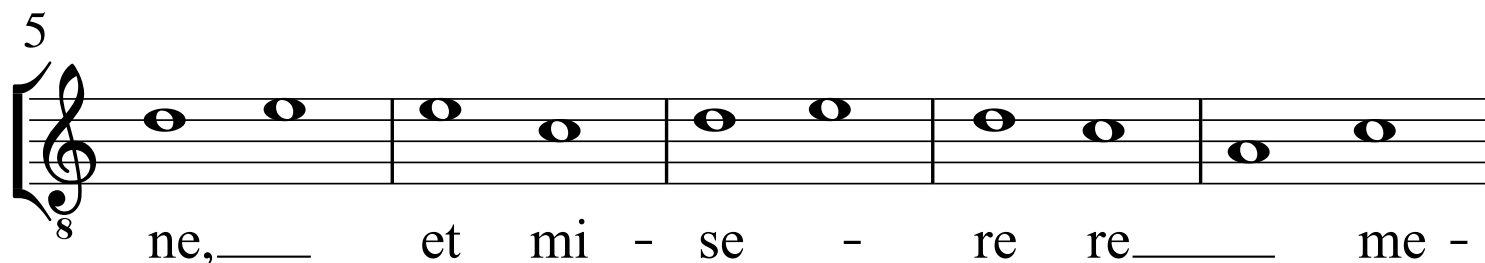
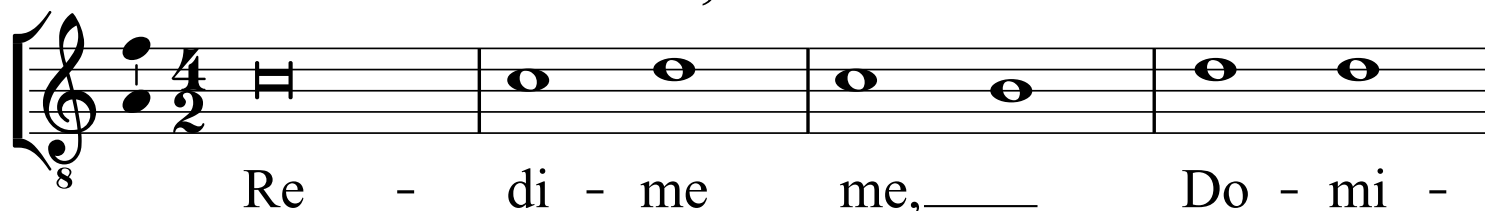
Do - mine, bene-di - cam te, Do - mi - ne.

A - - - men.

Tenor

Redime me, Domine à5

John Baldwin
(~1560 - 1615)



Basso

Redime me, Domine à5

John Baldwin
(~1560 - 1615)

8 Re - di-me me, Do-mi - ne, Do-mi - ne,

4

8 re - dime me, Do-mine, et mi - sere-re me - i, et

8

8 mi - se-re - re me - i, me - i. Pes

12

8 e-nim me - us ste-tit in vi-a re - cta,

16

8 ste-tit in vi - a re - cta. In ec - cle-si -

20

8 is, in ec-cle-si - is, in ec - cle - si-is bene-

24

8 di cam - te, Do - mi - ne.

27

8 A - - - men.